

19 Greenford Avenue, Hanwell, London, W7 1LD  
020 8567 3219



**Freehold / House - End Terrace**

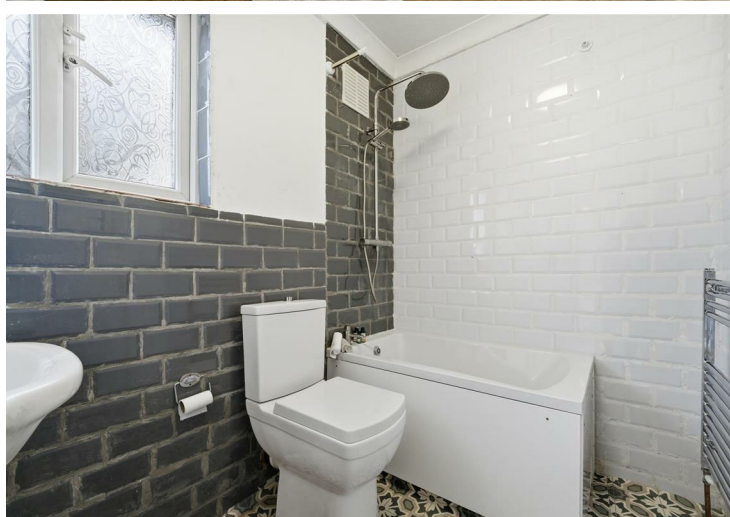
## Cowper Road

### £739,000

Offered chain free. This attractive freehold three bedroom, end terrace house with a side annex and off street parking is conveniently located in sought after Poets Corner within a short walk of Hanwell Elizabeth Line Station, saving daily commuting time with speedy access to Central London and Heathrow.

- End Terrace House
- Close to Hanwell Elizabeth Line
- Off Street Parking
- Three Bedrooms
- Two Reception Rooms
- Conservatory
- Gas Central Heating
- Double Glazing
- Chain Free







**Freehold / House - End Terrace**

# Cowper Road, W7 1EH

## £739,000

Good size accommodation comprises of 3 Bedrooms / 2 Receptions / Kitchen / Bathroom / Conservatory / Side annex with additional separate WC / Front garden with driveway for stress free parking / Rear garden (low maintenance).

Full central heating and double glazing throughout.

Well situated on a tree lined residential road. Moments from Greenford Avenue, with its day to day shops eateries and various bus routes. There are highly regarded schools both primary and secondary within a short distance. With the green open spaces of Brent Lodge (Bunny) Park and Golf Course close at hand.



19 Greenford Avenue, Hanwell, London, W7 1LD  
020 8567 3219



# 4 Cowper Road, W7 1EH

Approximate Gross Internal Area  
96.81 sq m / 1042 sq ft

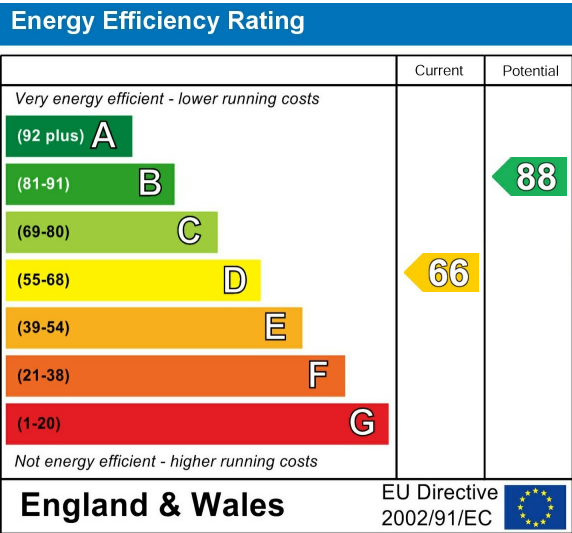


Whilst every attempt has been made to ensure the accuracy of the floor plan contained here, measurements of doors, windows, rooms and any other items are approximate and no responsibility is taken for any error, omission, or mis-statement.  
This plan is for illustrative purposes only and should be used as such by any prospective purchaser.  
Produced by jcphotographystudio.com

Council Tax Band

E

## Energy Performance Graph



Call us on

020 8567 3219

hanwellsales@sintonandrews.co.uk  
www.sintonandrews.co.uk

Agents Note: Whilst every care has been taken to prepare these particulars, they are for guidance purposes only. All measurements are approximate and are for general guidance purposes only and whilst every care has been taken to ensure their accuracy, they should not be relied upon and potential buyers are advised to recheck the measurements.